



Aude Borromée

Of stones and bodies

Including works during residency at the Picasso museum in Antibes

2025

In this series, initiated during a residency at the Picasso Museum in Antibes, I focus on the traces of the past engraved in the walls, the confusion between rock and architectural stone, the walls covered with vegetation, and nature resembling shreds of bodies, like those evoked by Germaine Richier's sculptures exhibited on the terrace of the Picasso Museum.

I observe how the building reveals a walled-up window, a loophole, how mineral, vegetal, organic, and architectural flesh intertwine like memories belonging to different temporalities.

Inspired by these stigmas, I construct a narrative around the reconstruction of *environmental bodies*. **I imagine how to recompose fragments of architecture, scraps of nature, shreds of bodies, how to weave links between living beings.**

Through a quasi-geological process of stratification, **I work to repair and suture these bodies, like a graft that restores and opens up the possibility of new life.**

The stones come together, the flesh tightens, the vegetation grows.

The project is inscribed in a long time, a density, in the thickness of matter.



Whispers from the past, 2025

160x135 cm, detail

Pigments, acrylic, braided rope, linen on canvas



Body of stone, 2025
230x110x30 cm, detail
Mesh, recycled paper, mortar, acrylic, braided rope



Gather, 2025
22x27x8 cm
Unfired clay, paper, canvas, acrylic, pigments, varnish



Wall, 2025
212x500cm
Pigments, acrylic, ink, braided rope, kraft on canvas



Whispers from the past, 2025
160x135 cm
Pigments, acrylic, braided rope, linen on canvas

Memory reconstruction, 2025
155x110x20 cm
Chicken wire, recycled paper, acrylic, pigments, canvas





Stones speak, 2025 - 140x212 cm
Pigments, acrylic, braided rope, kraft on canvas



Reconstructions, 2025

26x30x6 cm

Unfired clay, acrylic, rope, canvas, pigments, varnish



Wall memories 3, 2025
56x49 cm
Pigments, acrylique, encre de chine, pastel, corde tressée sur toile



Wall memories 4, 2025
56x49 cm
Pigments, acrylique, encre de chine, pastel, corde tressée sur toile



Scraps, 2025
16x35x15 cm
Unfired clay, wood, acrylic, rope, pigments, varnish

Wall memories 2, 2025

56x49 cm

Pigments, acrylique, encre de chine, pastel, corde tressée sur toile





Spiritual reconstruction, 2026

25x40x15

Unfired clay, wood, acrylic, rope, braided textile, pigments, varnish



Fragments, 2025 - 158x212 cm
Pigments, acrylic, braided rope on canvas



Body of stone, 2025 - 230x110x30 cm
Grid, recycled paper, mortar, acrylic, braided rope

Divided 1, 2025 - 41x16x10 cm
Unfired clay,, acrylic, rope, pigments, varnish



Divided 1, 2025 - 41x16x10 cm
Unfired clay,, acrylic, rope, pigments, varnish



Paysage de corps, 2025
23x28x9 cm
Terre cuite, émail



Stitching, 2025

204x69 cm

Pigments, acrylique, encre de chine, corde tressée, kraft, lin sur toile

Rock and stone time anchors

Body of stone, 2025
212x157 cm

Pigments, acrylic, braided rope, kraft on canvas



Parietal

Memories of strata

Since 2021

In this serie I draw inspiration from the cave period and explore **the link between humans and their environment**. These mineral works speak of stratification, temporality, and the space of the cave as a primitive shelter. They remind us of the importance of connecting to this density, to a thickness such as that of a rock wall in a society guided by images that scroll, screens without depth.

By folding and twisting, and covering the grid with successive layers of recycled paper, mortar and pigments, **I create volumes like living organisms, landscapes with geological formations and cavernous bodies**.

In these *Sculpted paintings* transform the flat surface of the canvas to adapt it to my perception of the landscape, to a plastic expression made of hollows, reliefs, successive planes and roughness, like the inside of caves where the painted wall is dark, textured, marked by asperities, drips and the imprint of time on the rock.

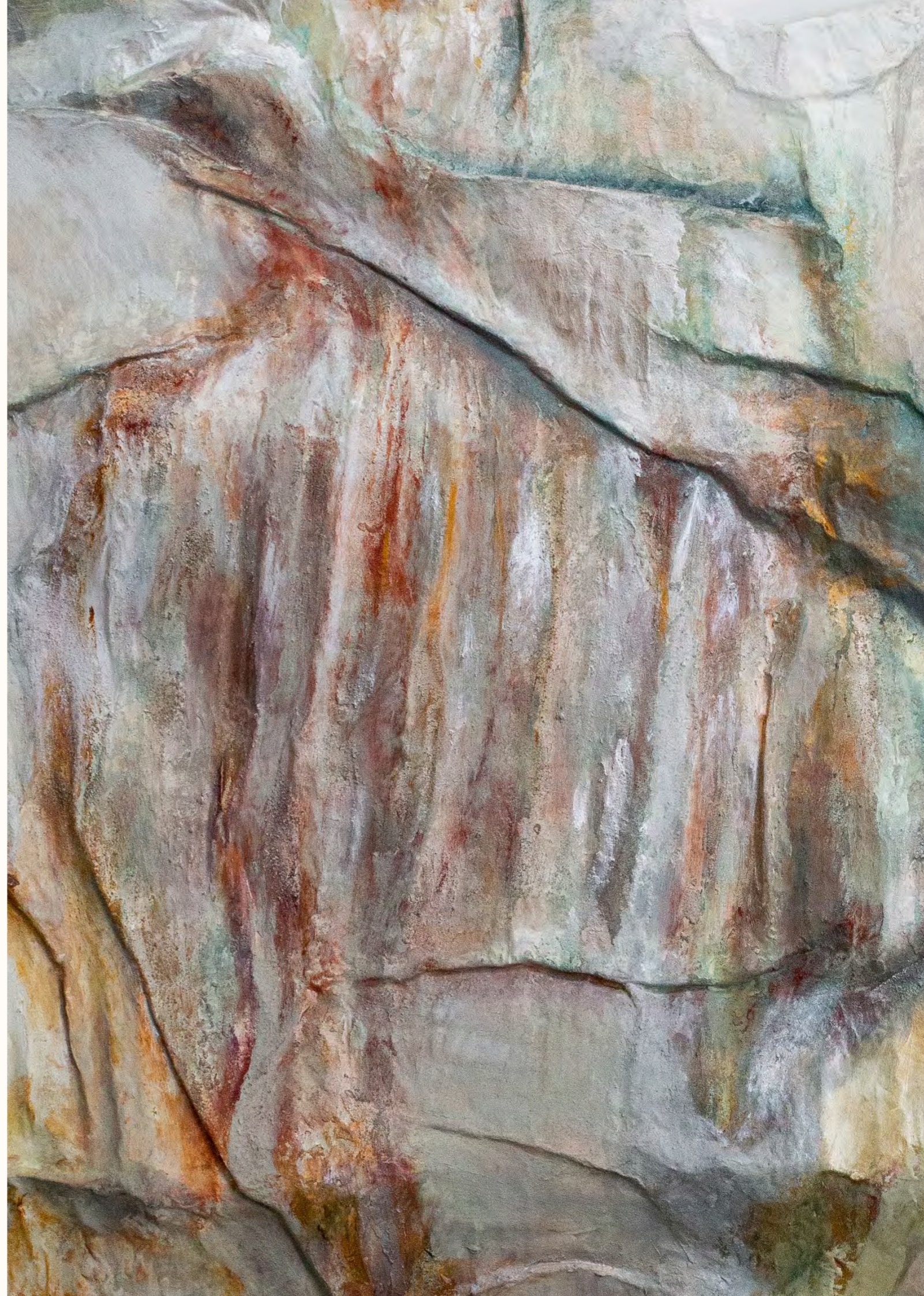
My production process echoes the way in which the land is built up through the accumulation and covering of materials.

Some pieces evoke raw places in direct contact with nature. Experiences that I describe as parietal, because they are close to the source and far from the world. *Bowels of the earth* recalls the ascent of Mount Kilimanjaro (Kenya), the depths of relief and crevasses, the discovery of eternal snows and a beauty that keeps us at a distance. *Green land* reflects the landscapes, lights and silence of the infinite steppes of Ladakh (India) on the border with China.

Runoff, 2022

162x140x15cm, mural, détail

Grillage à poule, papier recyclé, mortier et techniques mixtes





Rock imprint

Rising curtain, 2022 - 140x180x20cm, mural

Chicken wire, recycled paper, canvas and mixed media



The abandoned city, 2024
9x50x6cm
Unfired clay, rope



Abyssal, 2022
145x142x8cm, mural
Chicken wire, recycled paper,
mortar and mixed media



Runoff, 2022
162x140x15cm, mural
Grillage à poule, papier recyclé, mortier et techniques mixtes



Recomposing, 2025
14x25x5cm
Unfired clay and mixed techniques



Crevasse,
Ascent to the eternal snows

Earth bowels, 2021
180x115x25cm, mural
Chicken wire, recycled paper, mortar and mixed media



Wall fragments

Murality, 2024

17x25.5x10 cm

Unfired clay, wood, pigment, rope, varnish



Cracks, 2025
110x165x30 cm
Grid, recycled paper, mortar, pigments

Of bodies and souls

Reconstructing morphologies

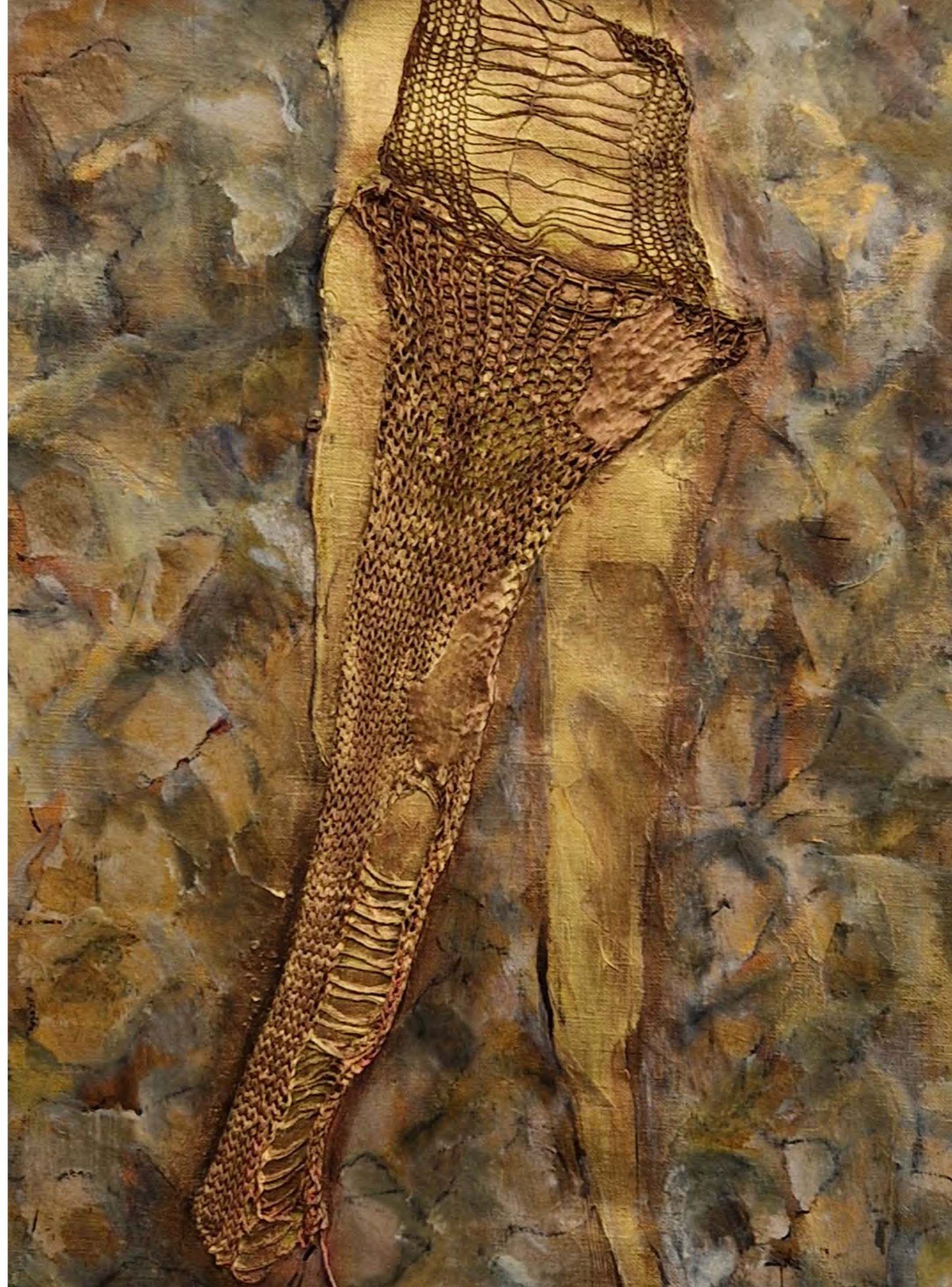
Since 2021

In my practice, I explore our environment through the body. Bodies (builds, plants, minerals, humans, animals) are the structures of our society, its biological foundations, and they are currently dislocated, deconstructed, suffering. **My works bear witness to their suffering, but also reflect on how to repair and heal them, and thus rebuild the relationship between man and his environment.**

Paintings, sculptures, clays recall living organisms at the frontiers, with bruised, deformed, torn and cavernous bodies.

I compose these **morphologies** by combining textile work made of stretched threads, knots and braids with steel or clay (*Swaddled*). The combination of a hard, rigid material with a supple, malleable thread **brings together the organic, the visceral and the structural, the skeleton.** The roped material supplants the original body, healing wounds like a graft, a tutor or a prosthesis. Unfired clay remains alive, in the making.

Each work is the result of a long time spent manipulating the material, **in an organic process that keeps it vibrant, without seeking to master it or smooth its imperfections.** My inner visions emerge through this carnal relationship and the gestures applied to the various materials.





Connecting worlds, 2025 - 216x80 cm
Pigments, acrylic, China ink, bkraft, raided rope on canvas

Reconstructing, grafting bodies, architectures

Shreds, 2025

150x109 cm

Pigments, acrylic, linen, kraft on canvas





Fragmented 5, 2025
47x13x8 cm
Unfired clay, acrylic, rope, pigments, varnish





Togetherness, 2025
89x125 cm - Pigments, acrylique, encre de chine, corde tressée sur toile



Stitch, 2025
150x109 cm
Pigments, acrylic, pastel, braided rope on canvas



Bodies that speak, 2026 - 128x216 cm
Pigments, acrylic, China ink, braided rope on canvas



Unfired clay, acry



Reaching out, 2025

141x92 cm

Pigments, acrylique, kraft, encre de chine, pastel corde tressée sur toile



Healing 2, 2025
56x49 cm
Pigments, acrylic, China ink, braided rope, linen on canvas



Healing 1, 2025
56x49 cm
Pigments, acrylic, China ink, braided rope, linen on canvas



Fragmented 3, 2025
42x16x15 cm
Unfired clay, acrylic, rope, pigments, varnish



Healing 3, 2025
56x49 cm
Pigments, acrylic, China ink, braided rope on canvas



Healing 5, 2025
56x49 cm
Pigments, acrylic, China ink, braided rope on canvas



Fragmented N6, 2026
46x20x15cm - Unfired clay, wood, acrylic, rope, braided textile, pigments, varnish



Guérison 4, 2025
56x49 cm
Pigments, acrylique, encre, corde tressée sur toile



Fragmented N6, 2026
46x20x15cm

Unfired clay, wood, acrylic, rope, braided textile, pigments, varnish



Healing 6, 2025

56x49 cm

Pigments, acrylic, China ink, braided rope, kraft on canvas



Body repair,
Bringing together organic, visceral, and skeletal elements

Embraced, 2024
10.5x4x3.5cm - Unfired clay, rope

Swaddled, 2024
23x10x8cm, Unfired clay, wood, acrylic, rope, pigments, varnish





Communicating souls, 2026

127x125 cm

Pigments, acrylic, China ink, kraft, braided rope on canvas

In a spiritual world

Since 2025

The equestrian world has structured my daily life according to the doctrine of the Cadre Noir in Saumur, "calm, forward, straight".

As a result, my artistic approach is rooted in a philosophy of life, an active meditation mirroring the practice of this art.

In these works, I do not seek to represent the equestrian world, but rather to convey the physical sensations, the essence of the connection between humans and living animals, as well as the notion of care embodied in the relationship between the rider and their partner.

I wish to convey a spiritual universe devoid of words, yet one in which ties and actions arise from a subtle balance and an attitude toward others and the environment. This is likely why the scenes I depict often feature arches or vaults in golden hues reminiscent of medieval religious triptychs.

My paintings go beyond the theme; they offer a glimpse into the strength of the bonds that unite humans and non-humans, into the connection to space, nature, and built environments. They shed light on the restorative and transformative nature of these relationships over time.



In a spiritual world, 2026 - 68x57cm - Pigments, acrylique, China ink, linen on canvas



Partner, 2026
74.5x58cm
Pigments, acrylic, China ink, braided rope on canvas



Through, 2026
73.5x57cm
Pigments, acrylic, China ink, braided rope on canvas



A spiritual world N3, 2026 - 162x216cm - Pigments, acrylic, China ink, braided rope, horse hair on canvas



Care, 2026 - 42x15x10cm, détail
Unfired clay, wood, acrylic, rope, braided textile, raffia, pigments, varnish

Care and rest, 2025 - 75x55cm
Pigments, acrylic, China ink, braided rope, kraft on canvas



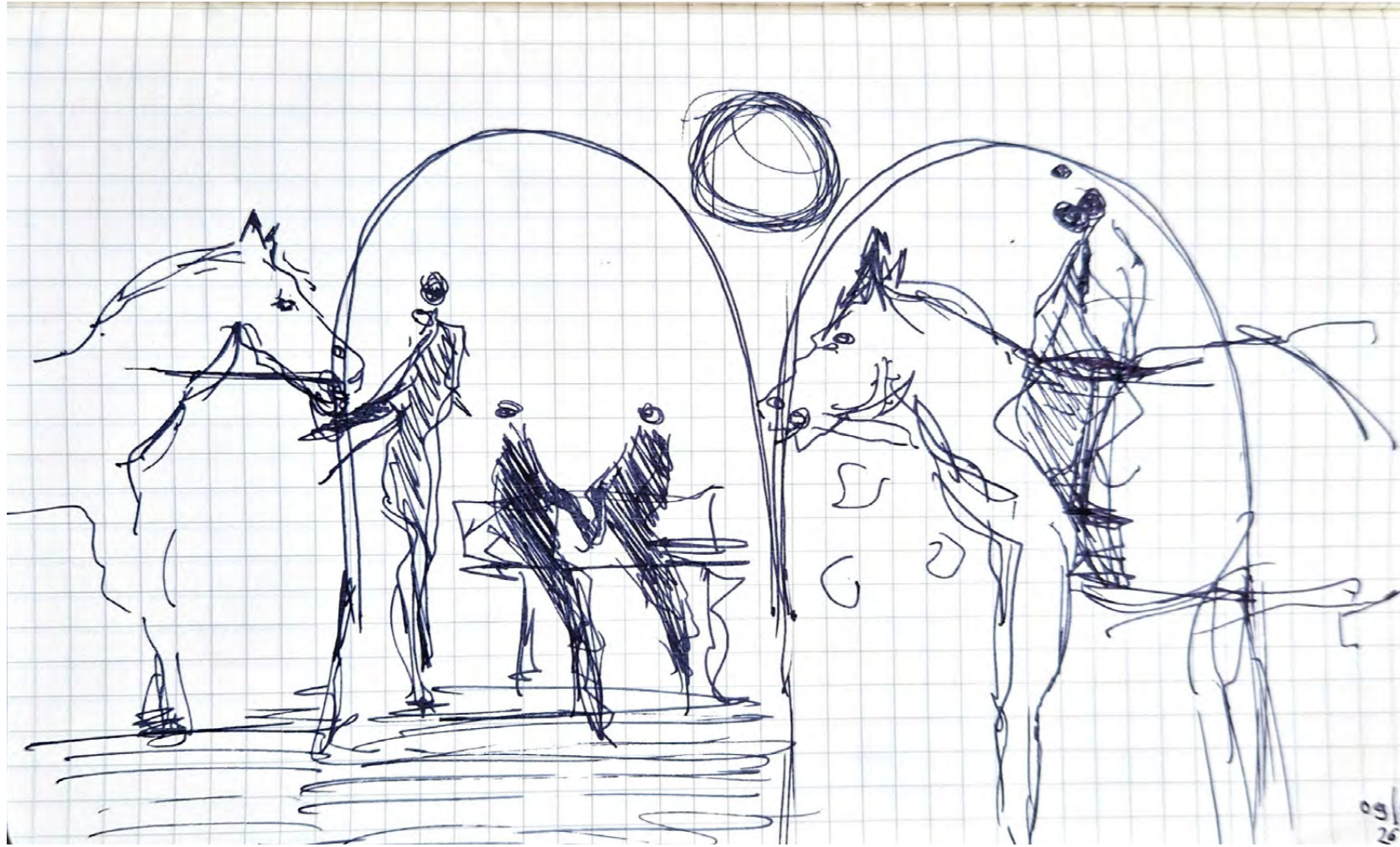


Care, 2026
42x15x10cm
Unfired clay, wood, acrylic, rope, braided textile, raffia, pigments, varnish





Body merging, 2025
150x163 cm
Kraft, pigments, acrylic, China ink,
braided rope, horsehair on canvas



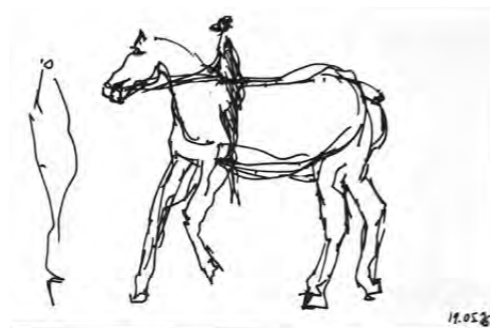
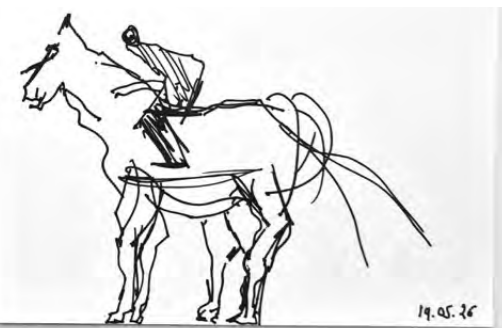
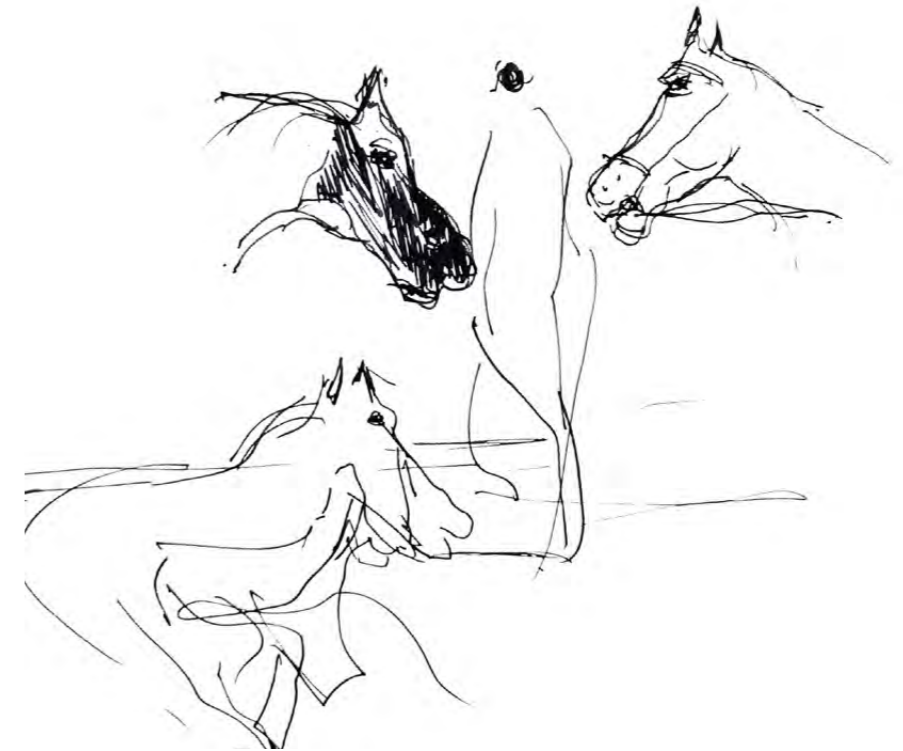
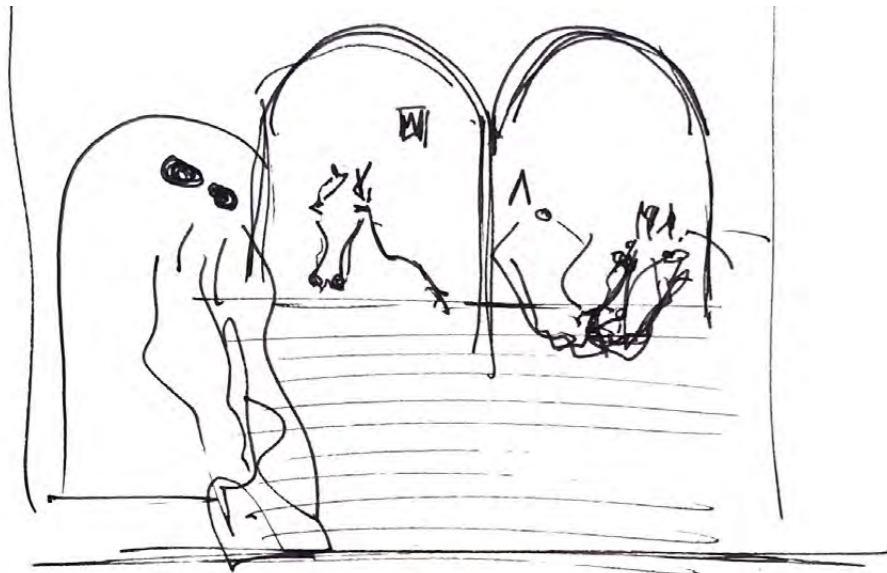
Impulsive sketches are the starting point for future creations; they evoke themes, formats.
Here, I explore the space for the livings, interrelations, spirituality and I take on certain codes of old paintings.



A HOME FOR THE LIVING
09 26



Mist, 2026 - 91x125cm - Pigments, acrylic, China ink, kraft, braided rope, horse hair on canvas



Sketches express our inner soul, our deep thoughts.
They capture an intuition, reveal an authentic vision.



Care and rest, 2025 - 75x55cm
Kraft, pigments, China ink, acrylic, braided rope on canvas

In a spiritual world N1, 2025 - 75x55cm
Pigments, acrylique, China ink braided rope on canvas





2, rue Edouard Vasseur
94200, Ivry sur Seine. France
Tel : +33 (0)6.03.05.00.84

Email : contact@audeborromee.com

Web: www.audeborromee.com

Insta: [@aude_borromee_artiste](https://www.instagram.com/aude_borromee_artiste)

Artiste auteur - @ADAGP

Siret : 518 342 704 00047

Aude Borromée





Exhibition of Picasso museum residency, Antibes, 2025

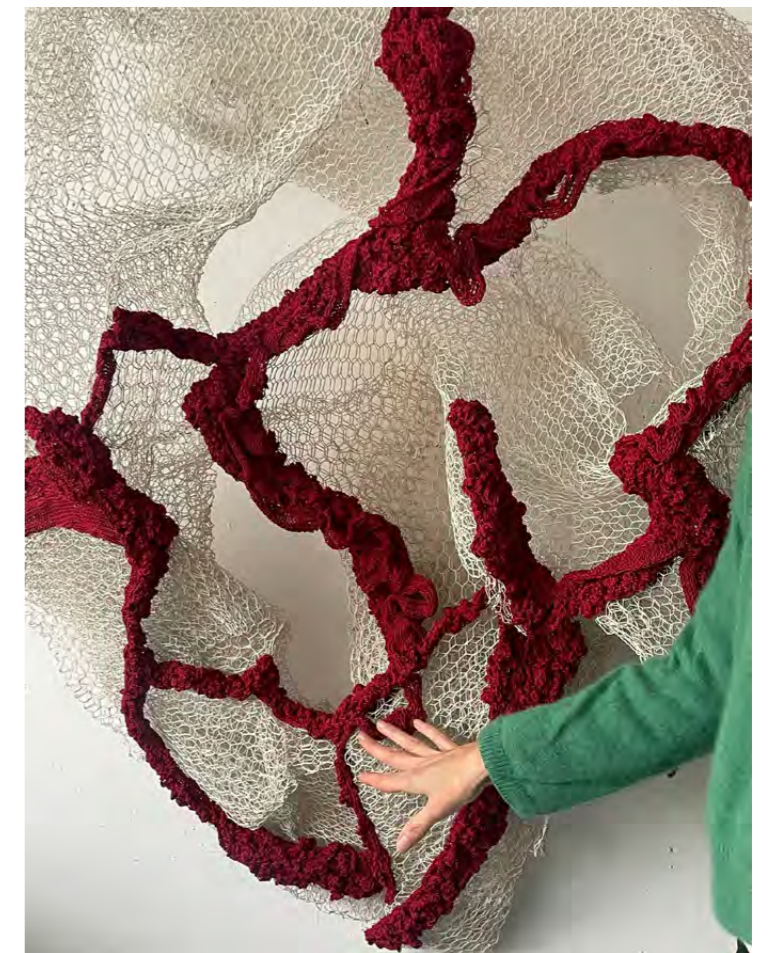


Exhibition of Picasso museum residency, Antibes, 2025



Exposition de résidence au musée Picasso, Antibes 2025





Environmental bodies
Chicken wire, pigments, and rope